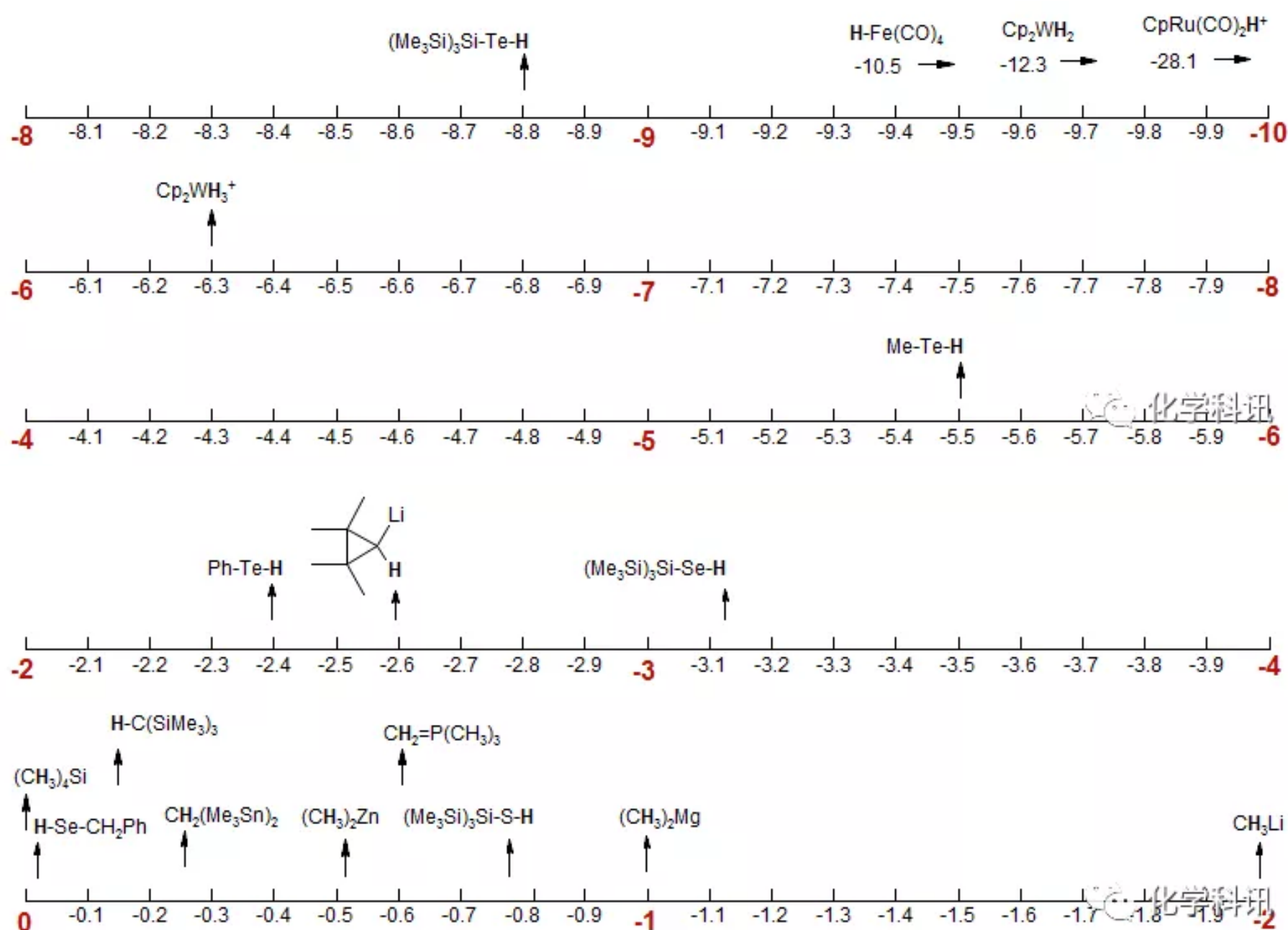


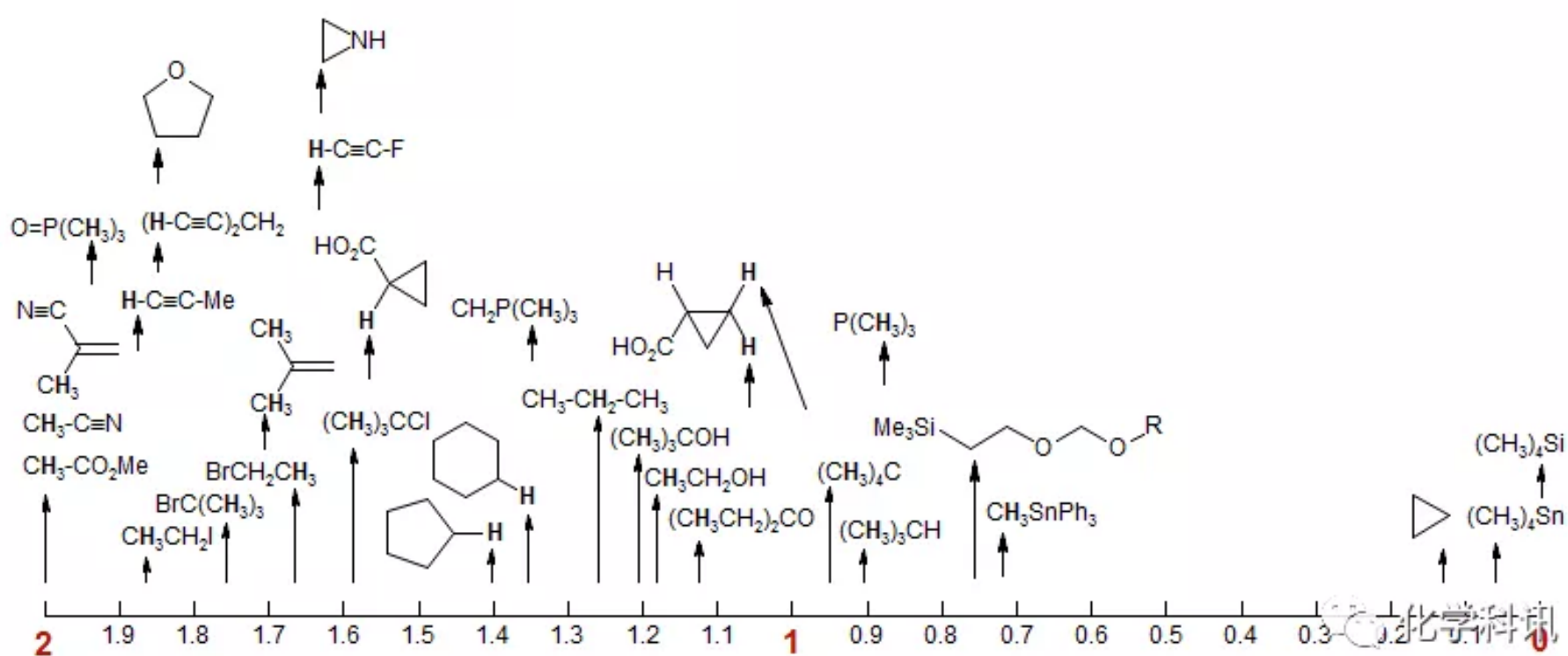
常见官能团的化学位移

一、HNMR化学位移 (δ -10 to 20)

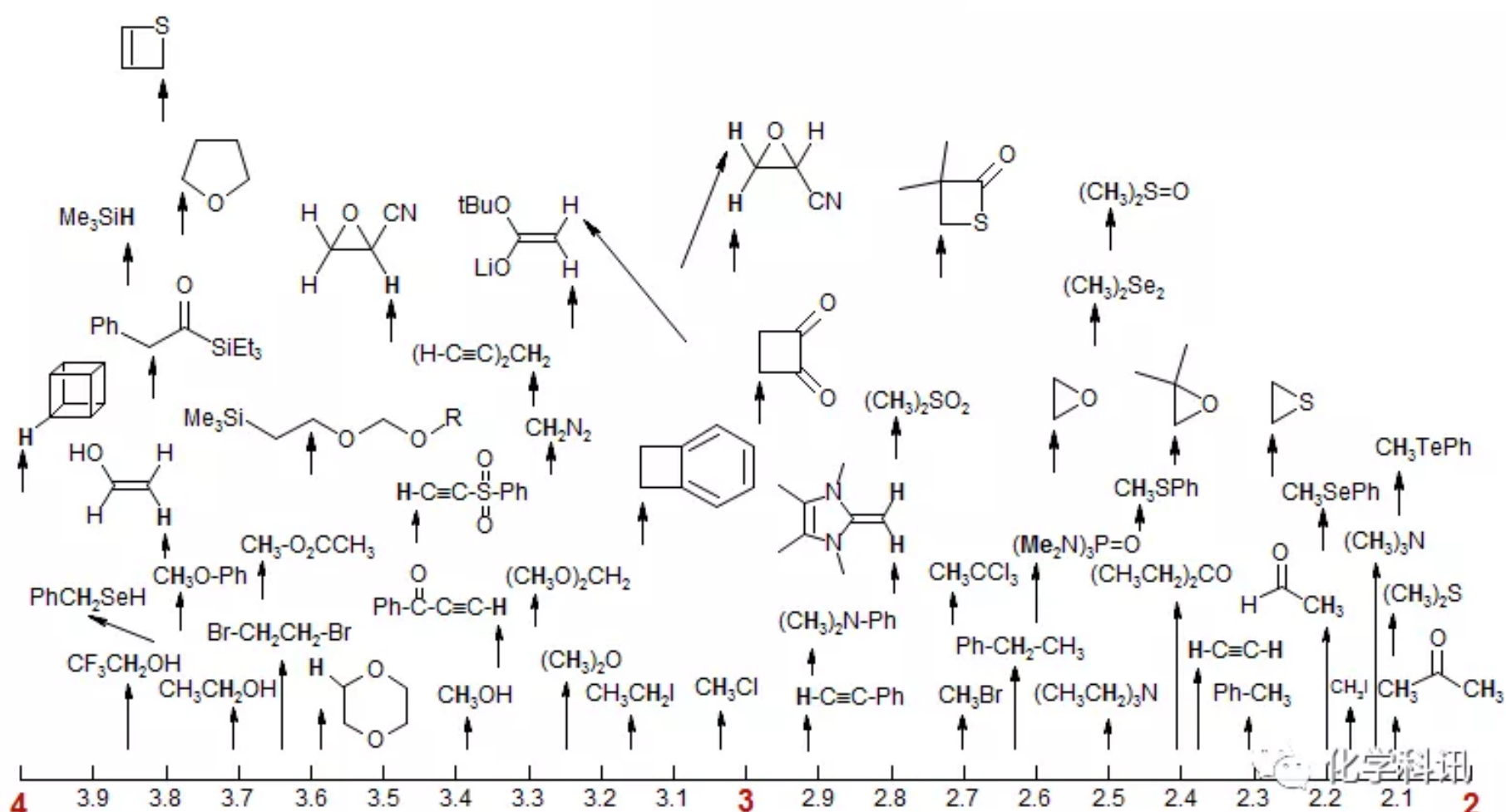
Representative Proton Chemical Shift Values (δ -10 to 0)



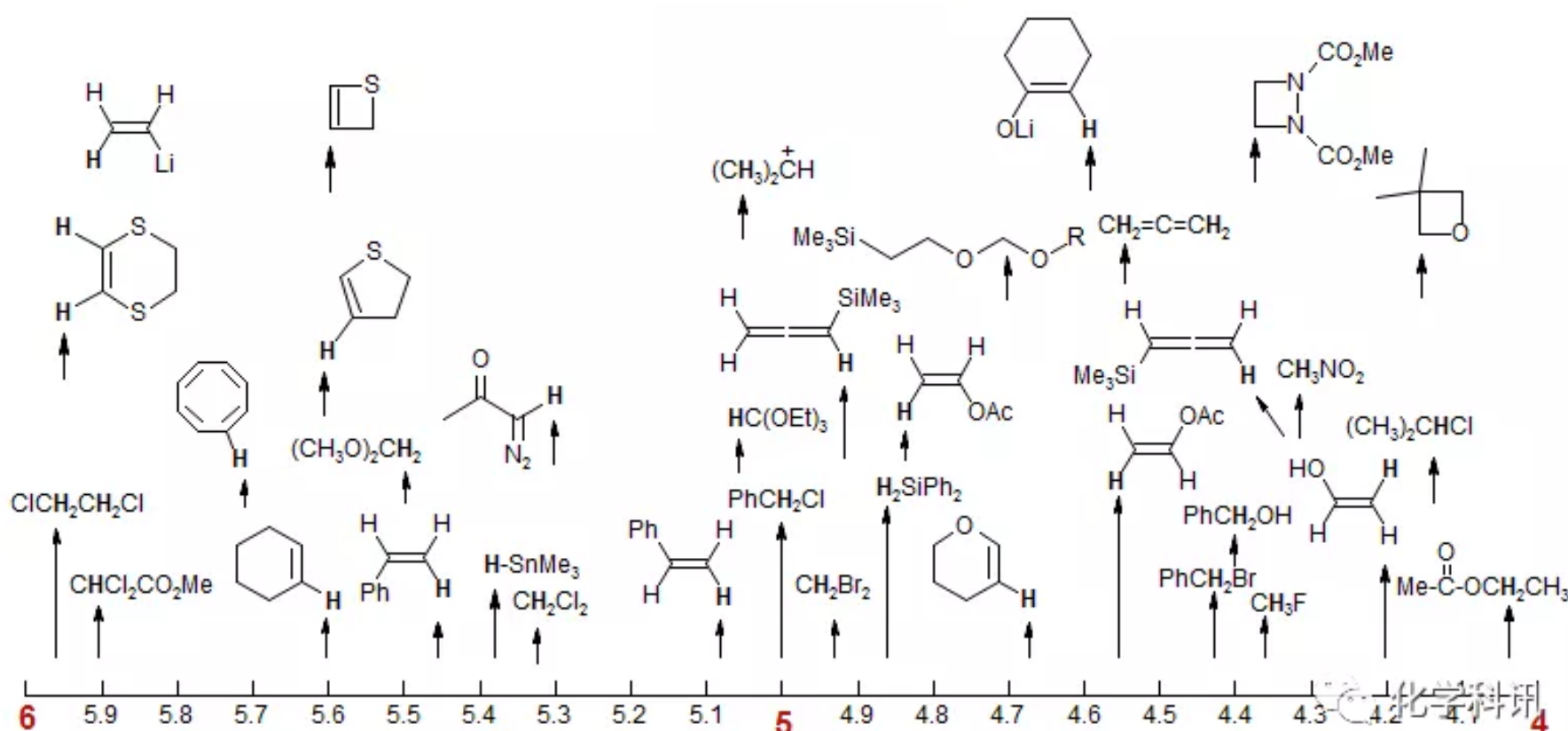
Representative Proton Chemical Shift Values (δ 0 to 2)



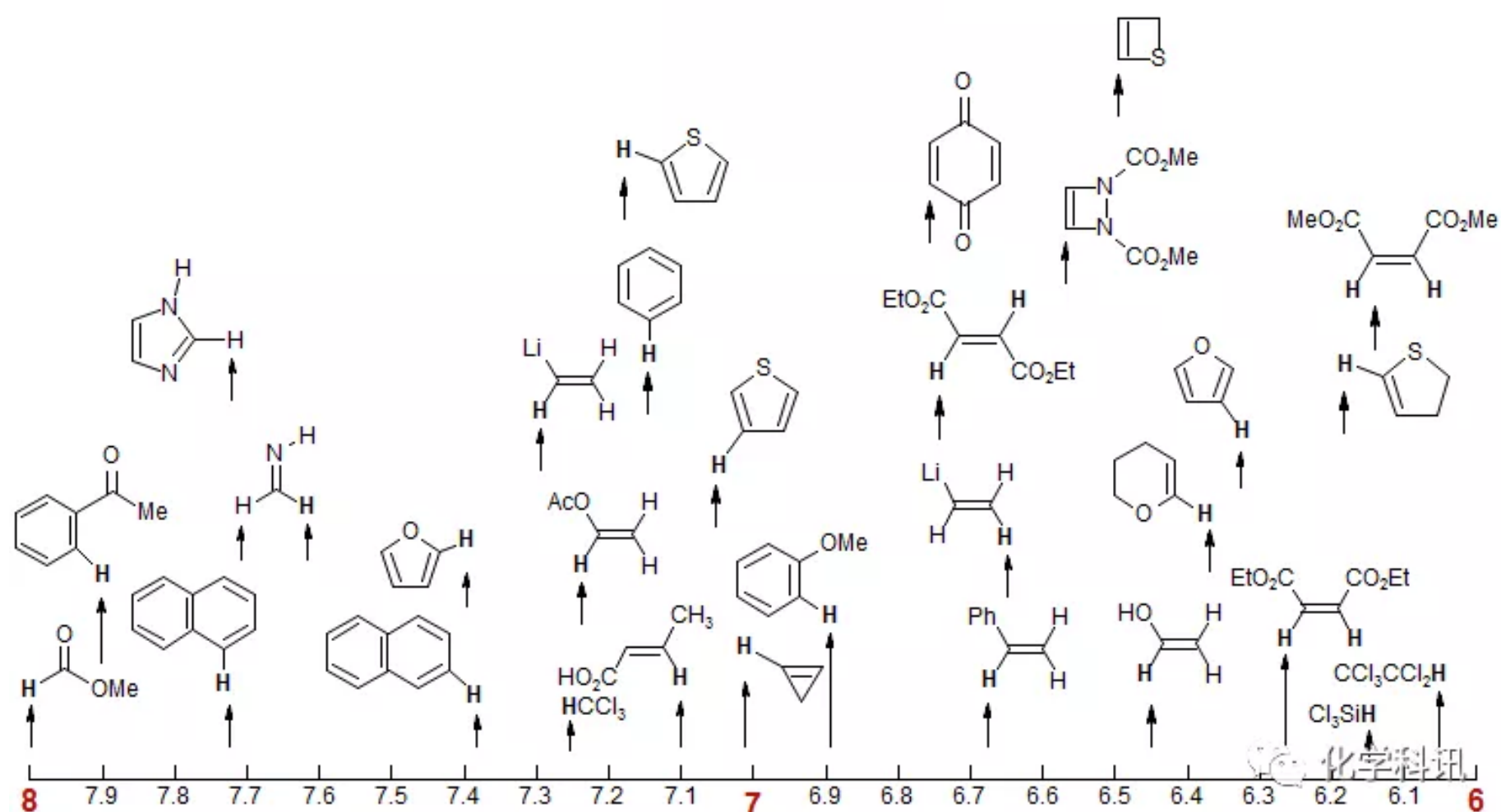
Representative Proton Chemical Shift Values (δ 2 to 4)



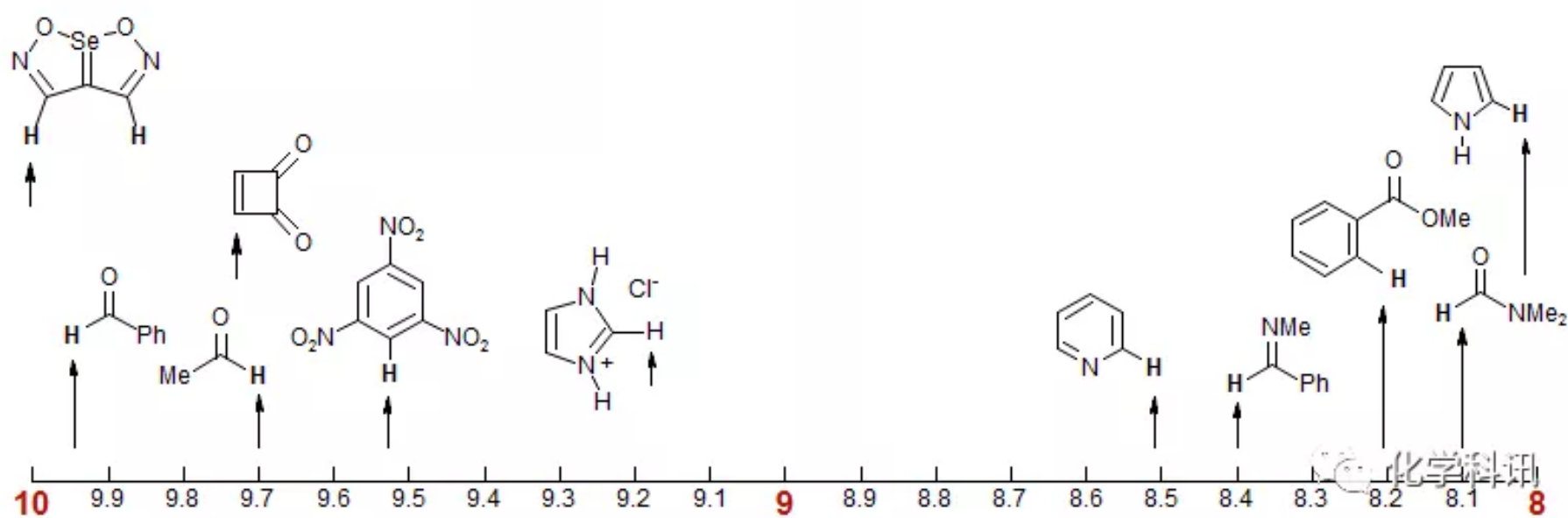
Representative Proton Chemical Shift Values (δ 4 to 6)



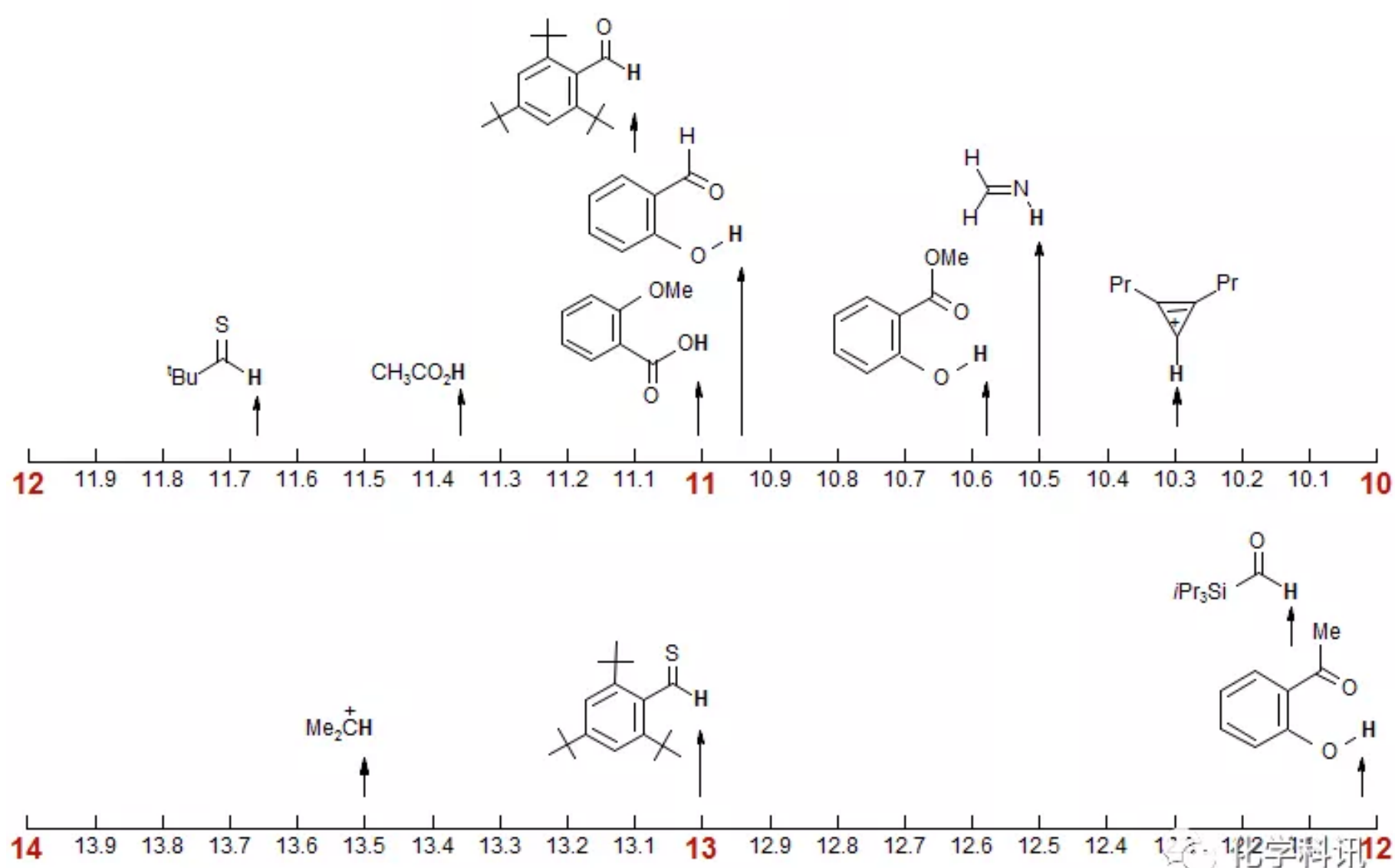
Representative Proton Chemical Shift Values (δ 6 to 8)



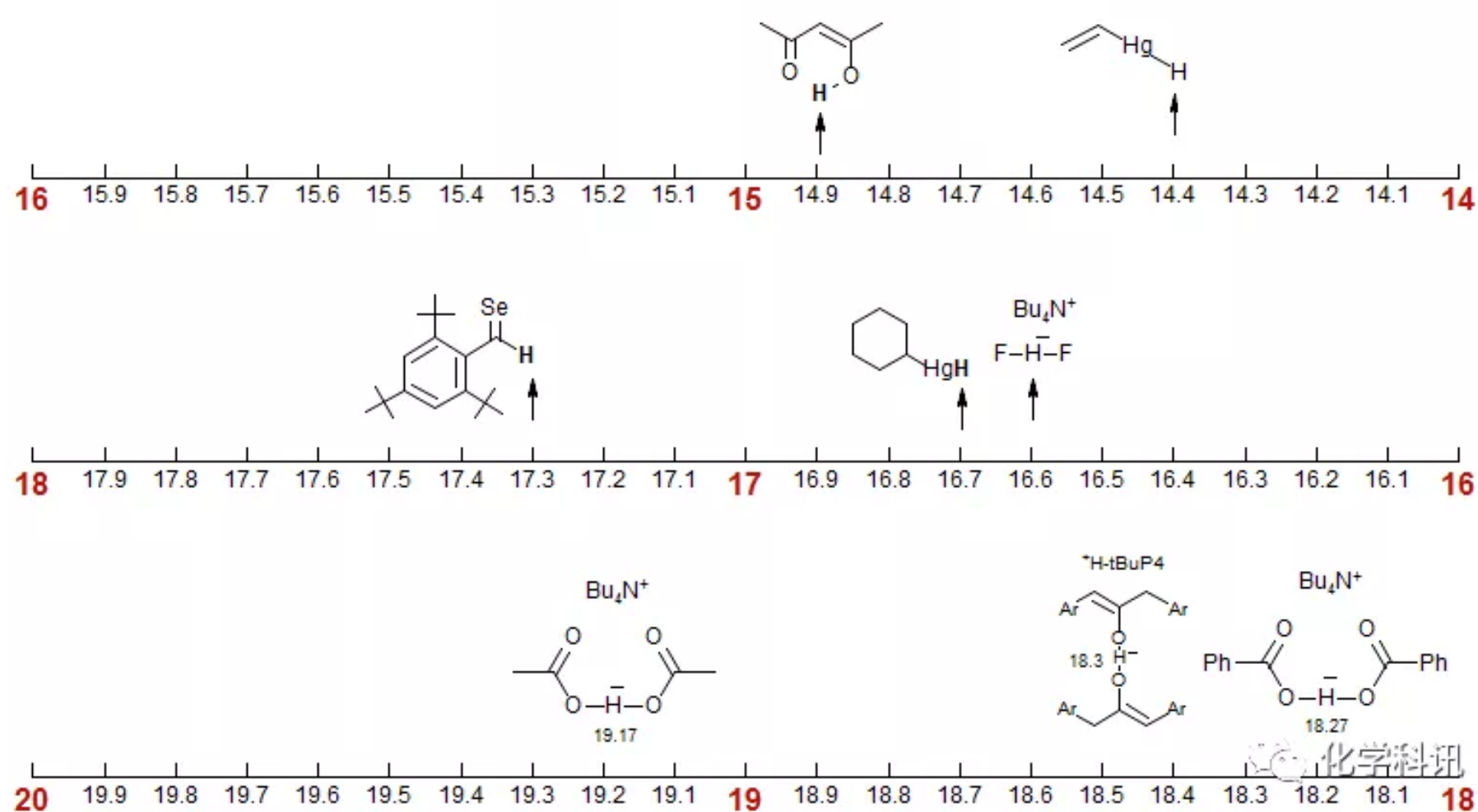
Representative Proton Chemical Shift Values (δ 8 to 10)



Representative Proton Chemical Shift Values (δ 10 to 14)

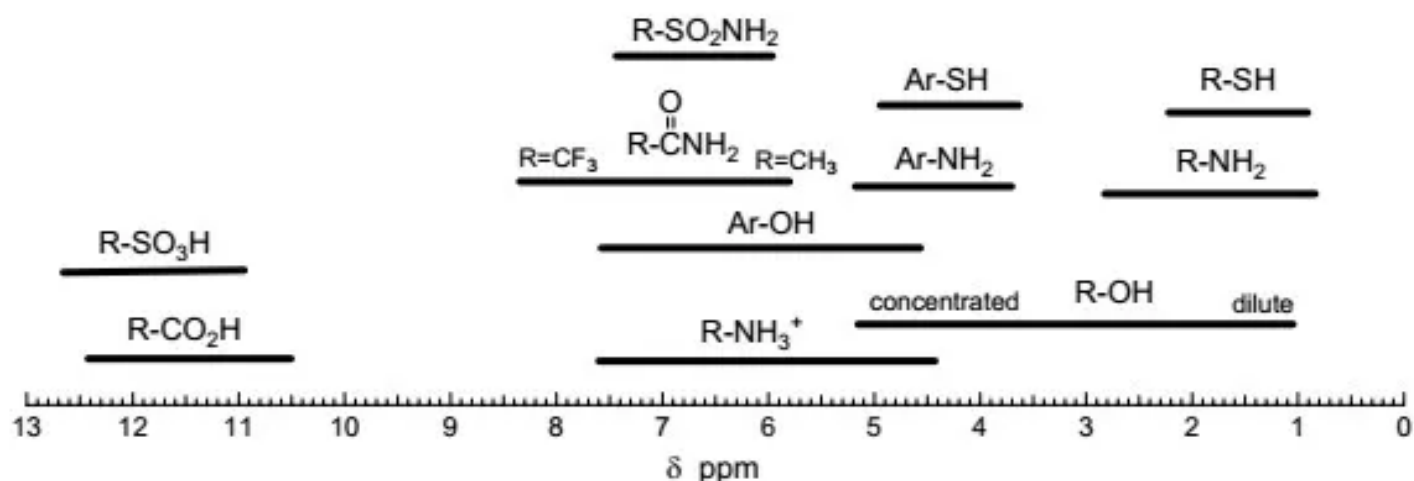


Representative Proton Chemical Shift Values (δ 14 to 20)



二、活泼氢化学位移 (CDCl_3)

Except for alcohols, the shifts are for dilute solutions in CDCl₃



三、CNMR化学位移

